

# The GREEN GAZETTE

2nd May 2025

Welcome to this week's edition!

Principal's Message

Headteacher Awards

Curriculum

School Games

Attendance

Walk to School

Drama Workshop

Important Dates for Summer Term

Community Notices

---

# Principal's Message

---

**Dear Parents and Carers,**

Welcome back to the **Summer Term**—the final stretch of the academic year! This term is unusually split, with **five weeks before the half-term break** and **eight weeks following it**, so it's set to be a busy and exciting period for everyone.

## **Tragic news**

Our sincere thoughts go to the family of the 15 year old girl who lost her life in a nearby traffic accident where the Fritchway meets the road. She was cycling and collided with a van. Please remind your children about road safety if you are allowing them to be 'out and about' on foot or on a bike. Please also reinforce the need for a cycle helmet.

## **Inclusion Review**

We were delighted last Friday to welcome a representative from the **Local Authority** who conducted an **Inclusion Review**. The feedback was incredibly positive and highlighted the inclusive and supportive environment we strive to foster every day. Thank you to the staff, pupils, and parents who helped demonstrate the values we work so hard to uphold.

## **Mersea Preparations!**

We are now in the final stages of preparing for the **Y4 trip to Mersea**. Excitement is building, and we're looking forward to a few fun-filled days of outdoor adventures and team-building activities. A separate letter with key information has been sent,

## **Assembly messages**

In assemblies in the last two weeks I have shared the story of St George and the dragon and what if he had not have helped? This week we discussed being a 'creative navigator' and overcoming challenges. I shared an image of an iceberg to illustrate that most of the ice is underwater. But the unseen things are very important, especially when they do not lead to success.



## Warmer Weather – Stay Safe in the Sun

As the weather begins to warm up, please ensure your child brings a **water bottle** to school each day, and that **sunscreen** is applied before they arrive. We'll remind the children to stay hydrated throughout the day. Sun hats are also a good idea during outdoor activities.

## Bank Holiday Reminder

A reminder that school will be **closed on Monday for the Bank Holiday**. We hope you all enjoy a relaxing long weekend with family and friends.

## Staff News

Today we said goodbye and good luck to **Mrs Lisa Brown**. She is moving to a more admin based role in a local school. She has been a brilliant staff member for 11 years and supported 100s of children during that time. She will be missed by staff and children alike. Take care Mrs Brown and thank-you.

Miss Owen will be leaving at the end of this half term - she has taken a very exciting opportunity to work at Camp America over the summer.

Thank you for your continued support as we move through what promises to be a vibrant and rewarding term.

Warm regards,

**Mr Burden**  
Headteacher

---

# Headteacher's Award

---

25th April 2025



2nd May 2025



---

# Curriculum

---

## **Mighty Oak at ARU**

A huge well done to our **Mighty Oak** pupils in ARU who on Thursday took part in a **public speaking event at Anglia Ruskin University**. Their presentations were thoughtful, confident, and incredibly well-received. They represented the school with pride - well done.

## **Drama Assembly**

All the children received a drama workshop this week in three separate sessions, YR, KS1 and KS2. the children were able to really practise improvising.

## **New topics to learn**

Each phase has started a new focus for the summer term - you can read more on our website under the curriculum section.

---

# School Games

---

## Clubs Are Back – With Some New Arrivals!

Our **after-school clubs** have restarted, and it's been great to see so many children getting involved. This term, we're excited to offer a few **new clubs** too, Badminton and Athletics.

## Swimming - last group

The last set of children from Y1 and Y5 have started their 10 week swim lesson program at Dunmow Leisure Centre.

## Sporting Success – Year 3/4 Football

A huge **well done to our Year 3/4 football teams** for their fantastic performance at the recent tournament (last Friday).

- The **girls' team** took **1st place** with a brilliant display of teamwork and determination.
- The **boys' team** also did us proud, securing a strong **3rd place** finish.

Thank you to **Ms Jacob** for supporting the teams and taking them to the tournament—we're very proud of all who took part!



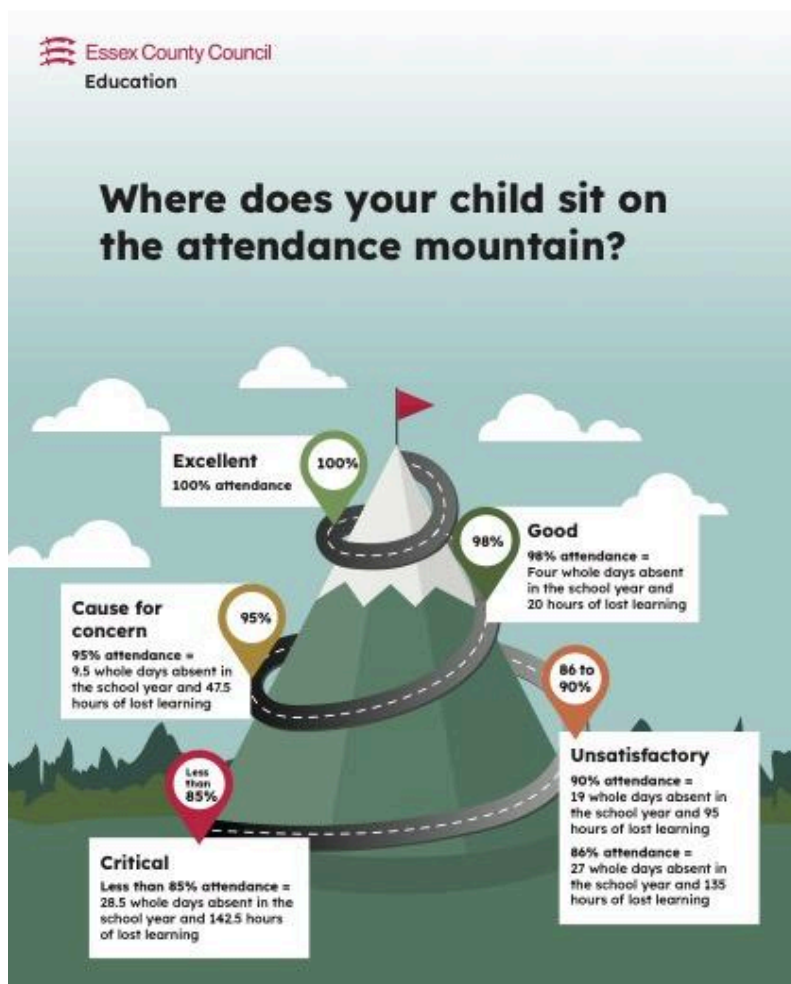
# Attendance

School Attendance stands - 94.40%, a slight increase since the end of the spring term.  
For the Summer term only - 95.56%.

Class winners for the last two weeks:

Week	Class	% Attendance	98% +
Week 27 22/4/25 - 25/4/25 (4 days)	Mercury	98.53	Mercury
Week 28 28/4/25 - 2/5/25 (5 days)	Pluto	99.41	Pluto and Jupiter

You all received up to date attendance letters over the Easter break.



Essex County Council  
Education

## GOOD TIMEKEEPING



### What to do the night before:



Get everything you need for school ready



Set your alarm allowing plenty of time

Make your lunch and drink if you bring a packed lunch to school



Turn off devices half an hour before bedtime

Have a good night's sleep - a minimum of eight hours!



**Five minutes late per day soon adds up to three days of lost school time**

For mental health support for young people  
visit: [www.youngminds.org.uk](http://www.youngminds.org.uk)

---

# Walk to School

---

## NEW WOW SCHOOL



Dear parent/carer,

Your child's school has chosen to be part of an exciting initiative to encourage more children and their families to walk to school. **WOW – the walk to school challenge** is delivered by Living Streets, the UK charity for everyday walking, to help as many children as possible experience the benefits of walking to school.

The pupil-led challenge enables children to self-report how they get to school every day. If they travel actively (walk/wheel, cycle, scoot or Park and Stride) at least once a week for a month, they get rewarded with a badge. It's that simple!

### What are the benefits of walking to school?

- Children feel happier and healthier
- They arrive to school refreshed and ready to learn
- Helps reduce congestion and pollution at the school gates

### What if we can't walk to school?

If driving, 'Park and Stride' to help your child earn their WOW badges. Park **at least ten minutes away** from the school and walk the remaining journey.

If using public transport, hop off **at least ten minutes away** and walk the rest (recorded as 'other' on the WOW Travel Tracker).

Where walking to school isn't an option, we work with schools to establish a bespoke approach to WOW that works best for their pupils' needs.

If you have any questions on the adaptability of WOW or have suggestions of how we can improve, we would love to hear your thoughts. Please email [walktoschool@livingstreets.org.uk](mailto:walktoschool@livingstreets.org.uk)

### What is a WOW badge?

There are 11 badges to be earned from September 2024 – July 2025. Each badge has been designed by a pupil from across the UK as part of our annual WOW Badge Design Competition. A new badge can be earned every month if pupils' walk/wheel, cycle, scoot or Park and Stride at least once a week.

WOW 2024/25 encourages pupils to **Walk with Imagination**, with a selection of badges ranging from a Bird's Eye View to Road Surfing up for grabs.

The badges are made in Cornwall from material that was otherwise destined for landfill, including fridge trays, plastic plates and yoghurt pot off-cuts. For more information, visit:

[livingstreets.org.uk/recycling](https://livingstreets.org.uk/recycling)

In the UK, last year, around 2,300 schools and over 600,000 pupils enjoyed the benefits of walking to school with WOW. Will you join us?

If you have any questions about the programme, please contact

....., or find more information and useful videos at:  
[livingstreets.org.uk/wowlaunch](https://livingstreets.org.uk/wowlaunch)

**Let's swap those school runs for school walks.**



---

# Drama Workshop

---

On Tuesday, we had Mikki Rom visit our school to give a taste of some acting! She took the Key Stage assemblies and did a few activities with the children. Reception Class also got to have a separate session too. It was great to see some of the children coming out of their comfort zone and being brave to stand up and perform in front of their peers.



---

# Important Dates

---

Key dates for the whole academic year can be found on the [website](#).  
Please check back regularly, as these dates can be subject to change.

## **SUMMER TERM**

BANK HOLIDAY - 5th May

Year 4 Residential - 7th to 9th May

KS2 SATs Week - 12th to 17th May

Reception 2025 Welcome Evening - 13th May (17:30 - 18:30)

Year 6 Residential Parents Meeting - 19th May (15:30)

Mars Class Assembly - 21st May (09:00)

FFG Cake Sale (Saturn & Jupiter) - 21st May (15:15)

Class Photographs - 22nd May

Finish 15:15 for Half term - 23rd May

HALF TERM - 26/05/2025 to 30/05/2025

Non-Pupil Day - 2nd June

Pupils Return to School - 3rd June

Multiplication Tests for Year 4 - 9th June to 13th June

Phonics Screening Year 1 - 9th June to 13th June

Year 6 Residential - 9th June to 13th June

Jupiter Class Assembly - 19th June (09:00)

HRS Induction Day - 26th June

Sports Day - 27th June

Venus Class Assembly - 2nd July (09:00)

Junk Percussion Day Reception to Year 4 - 7th July

Open Evening - 15th July (16:00 - 18:00)

FFG Flitch Fest - 18th July

Year 6 Production - 21st July (14:00 & 18:00)

Year 6 Leavers Assembly - 23rd July (14:15)

FFG Cake Sale (Reception & Venus) - 23rd July

Finish 13:00 for Summer Break - 25th July

Non-Pupil Day - 28th July

Non-Pupil Day 29th July

---

# Community Notices

---

**Please remember to check the 'Community' tab of our website regularly, as we upload community groups and events that we hope you may be interested in.**

[www.theflitchgreenacademy.co.uk](http://www.theflitchgreenacademy.co.uk)

This week you can find information on:

Flitch United Football Club

Flitch Green Community Hall

POP Essex SEND Clubs and Respite

Rock Steady Music Lessons

RTA Kids - 'Just Act' Drama Lessons for Children

RTA Summer Camps